





▶ KEY FEATURES

Manage your fleet with powerful and easy to use features.

SUPERIOR MAPPING OPTIONS

Engineered for enterprise fleets.

> Google maps > PatchMaps > OpenStreet

LOCATION UPDATES

Track the location of your assets.

> Timed interval

MULTI-SAT ACCESS

GNSS receiver for enhanced accuracy

>GPS >GLONASS >Galileo

GEO-FENCE (LANDMARKS)

Location intelligence with virtual perimeter.

> Custom shapes > Icons > Group assignment

LOW MAINTENANCE

Extra-long life and solar rechargeable battery

>No cable requirements >Mounts easily

REAL-TIME-ALERTS

Customizable text or email alerts.

> Landmark Entrance/Exit > Low Battery

ADVANCED REPORTING & ANALYTICS

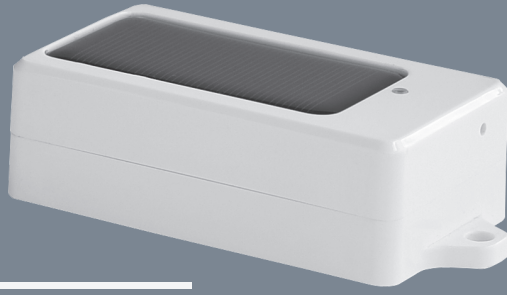
Turn data into actionable insight.

> Multiple out-of-box reports >Auto-email report options

RUGGED AND DEPENDABLE

Canada-tested for harsh environments

>Reliable signal virtually anywhere >Dust and water-resistant



DIMENSIONS

Height: 100.6 mm / 3.96 in
Height w/tabs: 124.1 mm / 4.89 in
Width: 56.6 mm / 2.23 in
Thickness: 33.7 mm / 1.33 in
Weight: 0.4 lb

TTIoT Solar

SOLAR POWERED ASSET TRACKER

▶ INDUSTRY LEADING ASSET TRACKING

Engineered to fit almost any application, the versatile TT IoTSolar device is a low-maintenance, high-performance asset tracking solution with the latest in coverage capabilities!

The TT IoTSolar ensures high accuracy with the latest LTE technology, utilizing three concurrent GNSS (GPS, Galileo, GLONASS). Stay informed about the location and status of your most valuable and vulnerable assets.

▶ A PURPOSE-BUILT SOLUTION FOR TRAILERS AND NON-POWERED ASSET TRACKING

By utilizing solar power and a long-life rechargeable battery, the TT IoTSolar device does not require any cables or external power, making it the perfect solution for trailers, containers, or anything in between. Housed in a rugged water and dust-proof case, the TT IoTSolar is a durable, dependable, and low-maintenance solution.

▶ HIGHLIGHT FEATURES



MONITORING

- Location
- Light
- Acceleration
- Temperature
- Humidity
- Pressure



ALERTS

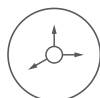
- Geofence Alert
- Low Battery Alert



SELF
POWERED



SOLAR
CHARGING



3 AXIS
ACCELEROMETER



IP67



EASY
MOUNTING

MODEL TTIoTSolar

PRODUCT DETAILS

Installation Type	Easy Mount
GPS Antenna	GNSS (GPS, Galileo, GLONASS)
Network Modem Type	LTE CAT M1
Self-powered	Solar with Li-Ion Rechargeable battery
Accuracy	2.5m CEP
Certifications	FCC, IC, CE, AT&T, Verizon, T-Mobile, Bell IP67 Rugged & dust / water-proof enclosure

ENVIRONMENTAL

Sensor Operation Range

Temperature	-40c to +85 C; Absolute accuracy 0.5 C
Humidity	Absolute accuracy ±3 %RH
Pressure	300...1100 hPa, Absolute accuracy ±1 hPa
Batteries	-40c to +85 C

Device Operation Range

Temperature	-20 to +60 C (batteries, enclosure)
Humidity	95% R.H. @ 50C non-condensing

REPORTING PARAMETERS

Timer based	Reports at a set timed interval regardless of motion (Eg: Every 12 hours)
Motion Continuous	Reports at a set interval while in motion, stops and a stationary timed interval (E.g: Every 12 hours while stationary, every 60 minutes while in motion)
Motion (Start Stop)	Reports when assets moves, stops and a stationary timed interval. (E.g. Starts and Stops, every 12 hours while stationary)

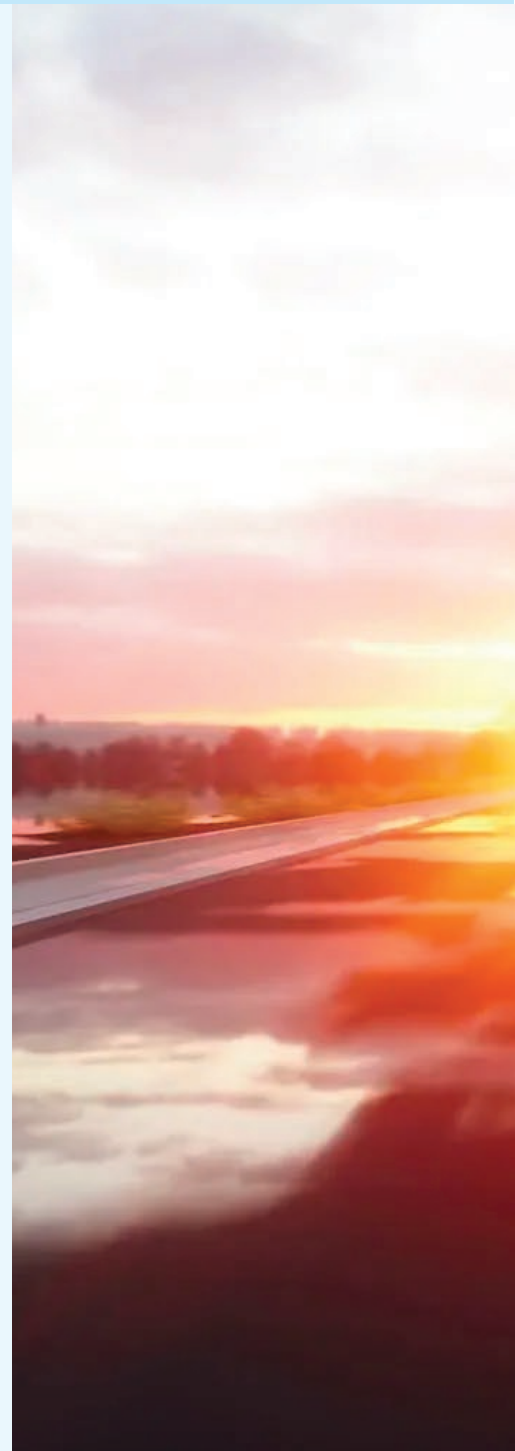
BATTERY MANAGEMENT

Fully Charged: up to 1500 reports

Recharging Times

Up to 4.2V at full charge

Optimal Charge Temp	0°C - 45°C	Note
Time to recharge from 0 - 100%	60 hours	Direct sunlight, clear day, device is not transmitting (or only transmitting once a day)
Time to recharge from 25 - 100%	30 hours	
Time to recharge from 50 - 100%	20 hours	
Time to recharge from 75 - 100%	10 hours	
Number of pings based on full charge	1500	At 25°C. Will Decrease at colder temperature



WE'RE HERE FOR YOU!

toll-free 855 287 4477

visit us titangps.ca

titangpstracking.com